

# **WESTERHAM TOWN COUNCIL**

## **Health and Safety Policy**



## Contents

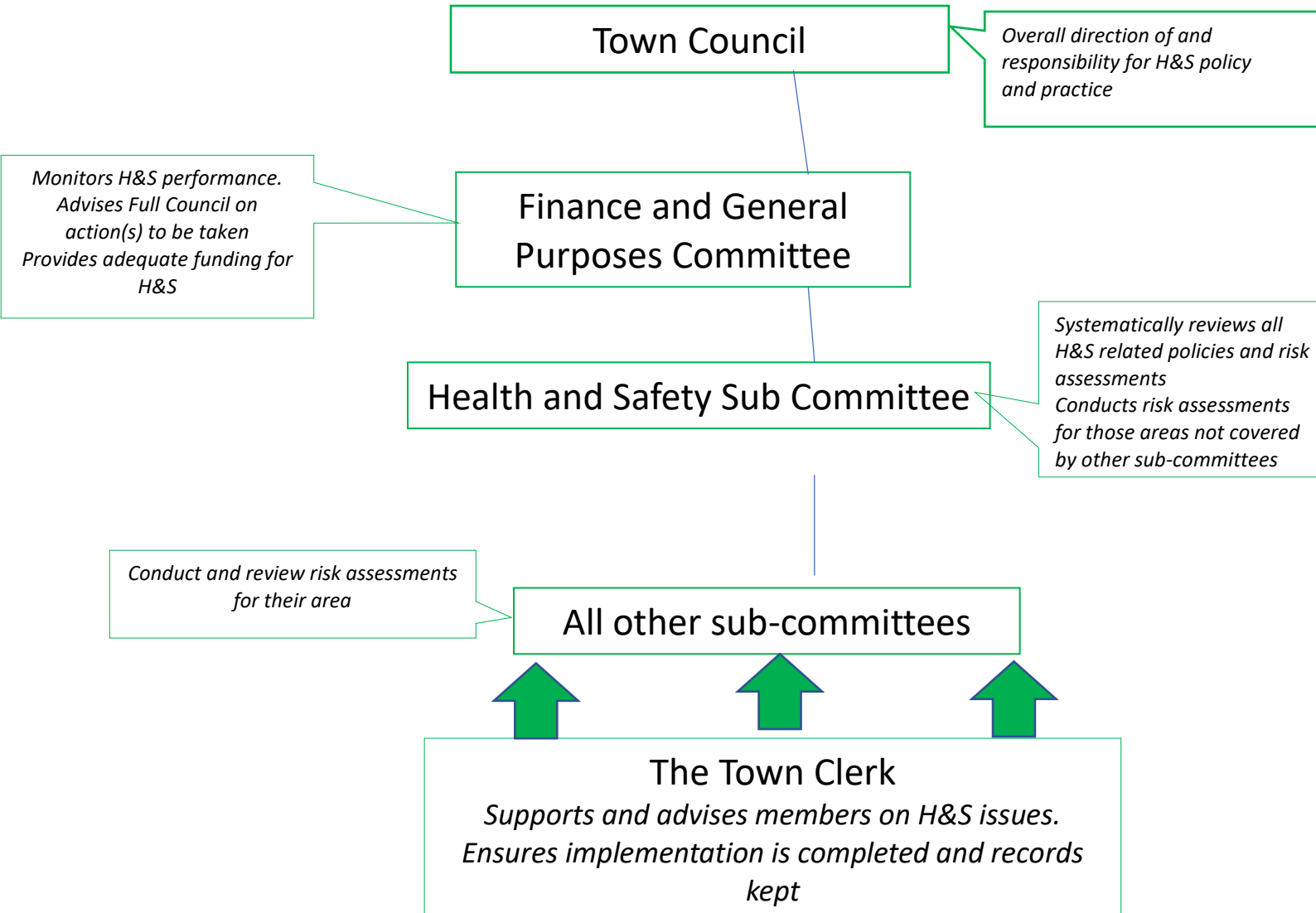
	Page no.
<b>Health and safety Hierarchy</b>	3
<b>Section 1</b>	
Statement of policy	
– WTC's commitment to legal obligations	4
Objectives	5
<b>Section 2</b>	
Organisation and responsibilities	
– Who is responsible for what in terms of health and safety	7
<b>Section 3</b>	
Arrangements	
– A description of the actual procedures in place to manage particular areas of health and safety which may cross-reference to work activity Risk Assessments.	10
• Risk assessment	11
• Contract workers	13
• Accident reporting	14

**Reviewed 1<sup>st</sup> December 2023**

**REVIEWED ANNUALLY**

**Review date November/December 2024**

## Westerham Town Council: Hierarchy of Health and Safety responsibilities



## **Section 1**

### **Health safety and welfare policy**

Westerham Town Council has adopted a health and safety policy to protect all of its employees, visitors, contractors and users of premises, and to encourage safe working practices. This document explains the policy and the systems that have been set up, within the Council, to make sure that the policy is working.

Please read this document carefully, and make sure you understand it. If you want to discuss safety matters generally, or have a particular problem, you should consult the Clerk.

### **Statement of health, safety and welfare policy**

Westerham Town Council accepts its responsibility as an employer to pursue a policy which ensures, so far as is reasonably practicable, the health, safety and welfare of all employees, contractors, visitors and users of premises, and others who may be affected by the Council's activities', and declares its intention to meet the requirements of the Health and Safety at Work etc. Act 1974, the Management of Health and Safety at Work Regulations 1999 and all other relevant statutory provisions.

Westerham Town Council will continue to ensure that its policy, legal obligations and experience are applied effectively throughout the Council where it has legal obligations.

The Council recognises that accident prevention is an essential element of good work practice and that its pursuit benefits the efficiency of the Council's operations, as well as the welfare of its employees. It is recognised that effective prevention of injury and damage requires commitment at every level.

## Objectives

Westerham Town Council's objectives in this respect are to:-

1. Provide and maintain workplaces that minimize the risk to the health and safety of any employee, contractor, visitor, or user of premises.
2. Assess the risks to the health and safety of employees and of anyone else who could be affected by its work activities, record the significant findings of such assessments and make them available to employees, contractors and users of premises. The compilation and implementation of practical codes of safety and health practice and conduct will be based on these risk assessments.
3. Provide, where appropriate, equipment, tools and plant which are safe and without undue risk to health.
4. Institute procedures for the reporting of defective equipment or other hazardous conditions and for the rectification of such defects.
5. Make proper arrangements for the safe use, handling and storage of all articles and substances used by the Council.
6. Promote the instruction and training of employees in matters of health and safety, so as to enable them to recognise and avoid hazards at work.
7. Inform employees, contractors, visitors and users of premises of the risks associated with its work activities by means of notices and instructions', and clearly describe the work methods necessary to minimize the likelihood of injury or of adverse effects on health.
8. Provide and maintain, where appropriate, safety equipment and protective clothing and ensure that employees are informed of their obligations in respect of its use.
9. Provide first aid equipment, facilities and training, and to make such other emergency provisions as are necessary to ensure the health and safety of all employees, visitors and others allowed access to the Council's premises.
10. Maintain a procedure for the recording of all accidents and instances of ill health occurring as a result of the Council's activities and ensure that such incidents are investigated.
11. Provide satisfactory welfare and amenity facilities and make such arrangements as may be necessary to ensure the welfare of employees whilst at work.
12. Advise all employees, contractors and users of premises of their obligations in health and safety matters and of the penalties for acting in such a way as to

endanger the safety or health of themselves or others.

- 13.** Maintain an organisation with responsibility for making this Policy effective. This includes nomination of a Health and Safety Sub-Committee of the Finance and General Purposes Committee who shall have direct responsibility for the general oversight of health and safety within the Council. Councillors appointed to the Health and Safety Sub-Committee are to be able to appoint the Clerk, and other Members of the Council, to act on their behalf in carrying out relevant instructions.
- 14.** Ensure that accident prevention within the Council is an integral part of operational management and is supported by a competent advisory service.
- 15.** Ensure the proper direction and control of all persons other than employees allowed access to the Council's premises and also ensure they are not put at risk by the Council's work activities.
- 16.** Control the use of contractors on the Council's premises and ensure that contractors work to safety rules at least of the same standard as those laid down through this Policy.
- 17.** Arrange for Health and Safety inspections of all premises and other areas at regular intervals, with reporting of findings and recommendations to the Members of the Council.
- 18.** Maintain arrangements with employees for joint consultation and participation in matters relating to their health and safety.
- 19.** Keep the Health and Safety Policy Statement under review and make improvements, additions and amendments that from time to time may be deemed necessary or desirable.

## **Section 2**

### **Organisation and responsibilities**

1. The Full Council will:-
  - a) Receive reports from the Health and Safety Sub-Committee. Via the Finance and General Purposes Committee.
  - b) Consider overall trends and issues likely to affect the Council.
  - c) Monitor the health and safety performance of the Council and compliance with legislation.
  - d) Ensure that adequate resources are available to discharge the Council's Health and Safety commitments.
  - e) Where necessary, give assistance to the Clerk/Deputy Clerk in carrying out inspections in the interests of effective health and safety management.
  - f) Undertake in conjunction with the Clerk/Deputy Clerk safety inspections, investigation of accidents, incidents, near misses and other dangerous occurrences, and forward reports of legally notifiable cases of disease to the appropriate authority.
2. The Clerk, on behalf of the Members of the Council, is to co-ordinate the implementation of the health, safety and welfare policy. The Clerk will, together with the Health and Safety Sub-Committee:-
  - a) Advise on planning and development of health and safety training to meet the Council's requirements.
  - b) Advise on prevention of injury or ill health to personnel and damage to plant/equipment.
  - c) Advise on legal requirements affecting health, safety and welfare, and implementation of the Council's health, safety and welfare policy.
  - d) In conjunction with nominated Councillors, carry out routine site inspections on all Council sites, reporting on failures to meet the standards set and situations where Council employees are put at risk from inadequate health and safety facilities (using the appropriate reporting form).
  - e) Maintain a central record containing relevant statutes, approved codes of practice (ACOPs), guidance notes, certificates, risk assessment reports, terms of reference, accident reports and investigations.

- f) Foster at the work place an understanding that injury prevention and damage control are an integral part of Council business and operational efficiency.
- g) Make arrangements for carrying out suitable and sufficient risk assessments in relation to work activities to control risk to the health and safety of employees.
- h) Ensure that all employees are fully aware of, and instructed in, their responsibilities as imposed by regulations, codes of practice and Council procedures, and take steps so far as is reasonably practicable to ensure that they are properly implemented.
- i) Ensure that all work carried out on Council premises and all plant, machinery and equipment (where relevant) complies with statutory requirements and approved or agreed standards.
- j) Ensure that employees are conversant with the Council's accident or damage reporting procedures and the Reporting of Injuries, Diseases and Dangerous Occurrences as specified by regulations; also ensure that the cause of any accident or dangerous occurrence is thoroughly investigated and that effective follow-up action ensues.
- k) Provide adequate first aid supplies and facilities in accordance with current regulations and ensure that a responsible person is appointed to take control of the situation.
- l) Ensure that statutory notices as required are displayed and that all statutory registers are provided and used.
- m) Ensure that periodic statutory tests, inspections and, where applicable, maintenance of premises are carried out and the appropriate records kept.
- n) Ensure that adequate fire precautions and appliances are in place and that, in the event of an emergency, employees are conversant with the fire drill to ensure that the building/premises are vacated as quickly as possible.
- o) Make available and ensure the use where necessary of safety equipment and protective clothing, in accordance with current regulations and Council instructions.
- p) Ensure that all employees are competent to carry out their duties safely having received adequate information, instruction and training and where necessary that they hold a valid certificate of competence.
- q) Ensure that all employees are properly supervised and have been instructed and trained with regard to specific regulations and the relevant system of work and that adequate training records are kept.



r) Ensure that regular consultation with the workforce takes place.

3. All **employees** are to take reasonable care of their own safety and that of any one else who may be affected by their work activities and are required to cooperate with Westerham Town Council in the fulfilment of its duties with regard to health, safety and welfare at work. Each employee, therefore, will be responsible for:-

- a) Making him/herself familiar with, and conforming to, relevant health and safety instructions at all times.
- b) Not interfering with or misusing anything provided in the interest of health, safety and welfare.
- c) Reporting to the Clerk incidents that have led to, or may lead to, injury or damage.
- d) Assisting as required in the investigation of accidents or incidents.
- e) Wearing the appropriate protective equipment where required.

**Signed:**.....

**Chairman of the Council**

**Signed:**.....

**Clerk**

**Dated:**.....

### **Section 3 Arrangements**

Risk Assessment
Contract workers
Accident reporting
First aid
Fire safety
Control of substances hazardous to health (COSHH)
Electricity at work
Workplace welfare
Display screen equipment
Personal protective equipment
Manual handling operations
Provision and use of work equipment
Lone working
Stress
Violence at Work
Child Protection Policy

## **Risk Assessment**

The Management of Health and Safety at Work Regulations impose wide-ranging responsibilities on Westerham Town Council including the requirement to assess the risk to the health and safety of employees and others arising out of Westerham Town Council's activities.

Westerham Town Council will carry out risk assessments in accordance with the Approved Code of Practice (ACOP) and published guidance.

General risk assessments will be carried out on all Council workplaces and on all activities organised by the Council. Risk Assessments will be carried out using a team approach by involving employees who are familiar with the work areas.

Risk assessments will be used to determine where action is required to achieve or maintain adequate control of risks. Any action taken will be in accordance with the principles of prevention detailed in the Management of Health and Safety at Work Regulations, namely by –

- Evaluating and reducing the risk as far as reasonably practicable.
- Implementing safe systems of work.
- Providing adequate personal protective equipment.
- Providing appropriate information, instruction & training.

### **The Clerk is responsible for ensuring that:-**

- a) All appropriate risk assessments are carried out, recorded and reviewed periodically.
- b) Risk assessments are suitable and sufficient and for accessing competent health and safety advice where required.
- c) Action is taken to adequately control risks to health and safety identified by the assessment.
- d) Systems are implemented, monitored and reviewed for preventive and protective measures such as safe systems of work.
- e) Employees are kept adequately informed of risks to health and safety and control measures are provided.
- f) Contractors or visitors who may be exposed to risks are adequately informed of the risks and any precautions or preventive measures.
- g) Copies of risk assessment documents are held.
- h) Emergency procedures are in place and are formally recorded.
- i) Appropriate information, instruction and training are provided.

### **All employees have a duty to:-**

- a) Take reasonable care for their own and others' health and safety.
- b) Use all work items in accordance with training and advice.

- c) Co-operate with the Council with regard to health and safety matters.
- d) Report accidents and dangerous incidents.
- e) Notify the Council of any shortcomings in health and safety arrangements.

Westerham Town Council's risk assessments are held centrally by the Clerk (see Westerham Town Council's Risk Assessment Manual 2009). Copies of risk assessments and safe systems of work are provided to relevant employees, volunteers and contractors.

## **Contract Workers**

It is Westerham Town Council's policy that, when contractors are used, they will represent the Council in the same way as direct labour and are required to work to the Council's policy.

The Clerk/Deputy Clerk is responsible for the appointment of competent contractors. Competence is assessed by checking relevant insurance policy cover, qualifications and experience, contractor references and establishing safe methods of work before work commences. Records of competency checks are retained.

Arrangements are made to ensure that contractors are acquainted with, and adhere to, the Council's Safety Policy and any other procedure or special instructions which may be in force relevant to specific operations. In particular, work is monitored periodically for safety and quality. Where appropriate, a formal record of checks carried out is retained.

A copy of the safety policy and other relevant information is given to the contractor upon acceptance of terms and conditions of the contract.

Adequate supervision will be necessary to complement the provision of information, instruction and training if required, ensuring that the Council's policy is strictly adhered to.

The Council's approved accident reporting form shall be used for the reporting of all accidents, however minor, whether to property, employee, contractor or general public, without exception.

Serious accidents or major incidents should in the first instance be reported immediately to the Clerk/Deputy Clerk by telephone.

Should a contractor use a sub-contractor for any works, it is a requirement under the Health and Safety at Work etc. Act 1974 for sub-contractors to conduct their work activities in such a way as to ensure that other persons are not exposed to risks to their health and safety.

## **Accident reporting**

The Reporting of Injuries, Diseases and Dangerous Occurrences Regulations 1995 (RIDDOR)(Copy in Council office) and the Social Security Act 1975 require organisations to record accidents/incidents and also to investigate and report to the nearest office of the Health and Safety Executive (HSE) accidents which result in the following:-

- Fatalities.
- Specified major injuries (see RIDDOR leaflet).
- Employees being absent from work for more than 3 days.
- Reportable industrial diseases (see RIDDOR leaflet).

When an accident/incident occurs, injuries must receive prompt attention, and any immediate danger should be alleviated. The Council accident book and/or the RIDDOR accident report form will be completed by the Clerk/Deputy Clerk.

All accidents are investigated and preventive measures implemented where appropriate. Any relevant risk assessments are also reviewed by the Clerk.

## **Employee's responsibilities**

All employees are informed at induction of the requirements to report all accidents/near misses occurring to themselves, members of the public, volunteers or contractors in the nearest accident book and to bring the accident to the attention of the Clerk/Deputy Clerk. Employees must also ensure that everything possible is done to minimize damage, particularly injury to persons.

Therefore they must:-

- Obtain first aid treatment for the injured person.
- Ensure that the accident/incident is reported to the Clerk/Deputy Clerk.
- Record the accident/incident by filling in the accident book and completing a copy of the Council's incident report form.

## **Employer's responsibilities**

The Clerk is to:-

- Establish whether the circumstances or the result of the accident/incident are immediately reportable under RIDDOR as a major injury or dangerous occurrence.
- Investigate the accident/incident and ensure that all necessary steps have been taken to prevent any immediate further injury or damage to property.
- Ensure that an entry in the accident book has been made.
- Take what steps are necessary to remedy the cause of the accident/incident in order to prevent a re-occurrence.
- Ensure that if an injured employee is absent from work, or unable to carry out his/her normal work for more than 3 days (not including the day of the accident), Form F2508 is completed and sent to the nearest office of the Health and Safety Executive (HSE) within 10 days of the accident.